

NWCCOG EDD Board Workforce Update

May 27, 2021

Mark Hoblitzell

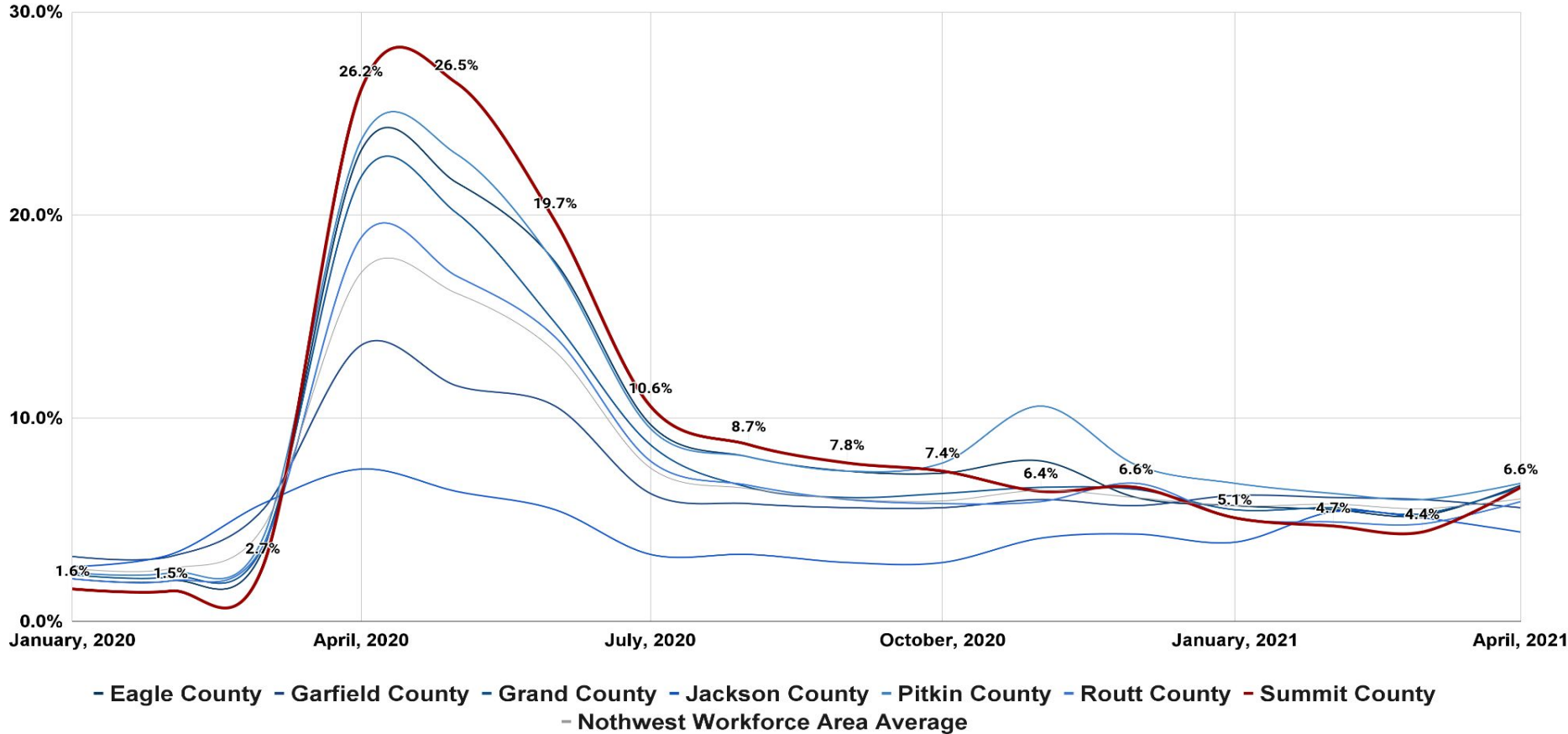
Business Services Coordinator, Northwest Colorado Workforce
Area



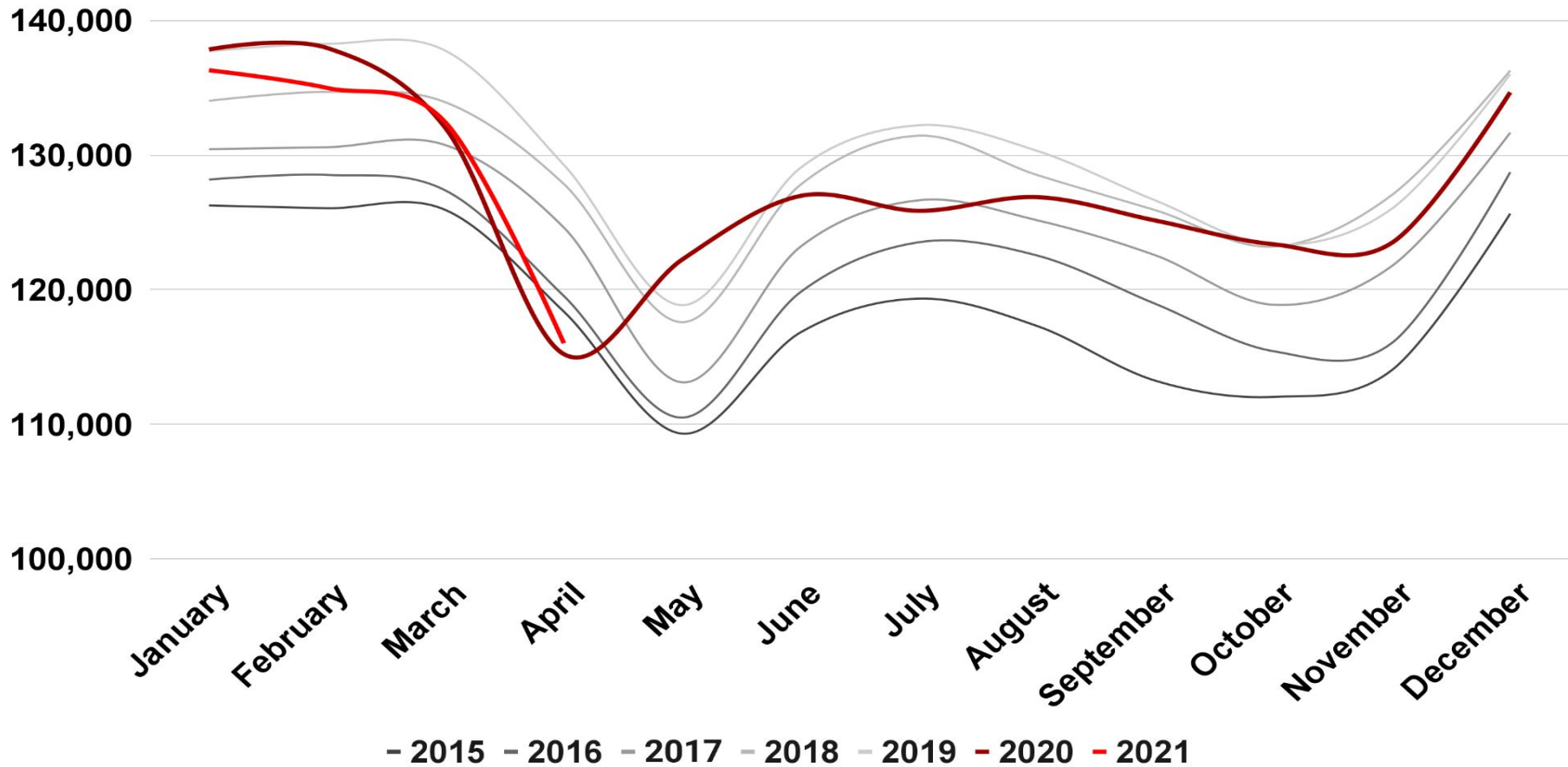
COLORADO
Department of
Labor and Employment

NWCCOG Unemployment Rates

Through April, 2021



NWCCOG Total Labor Force



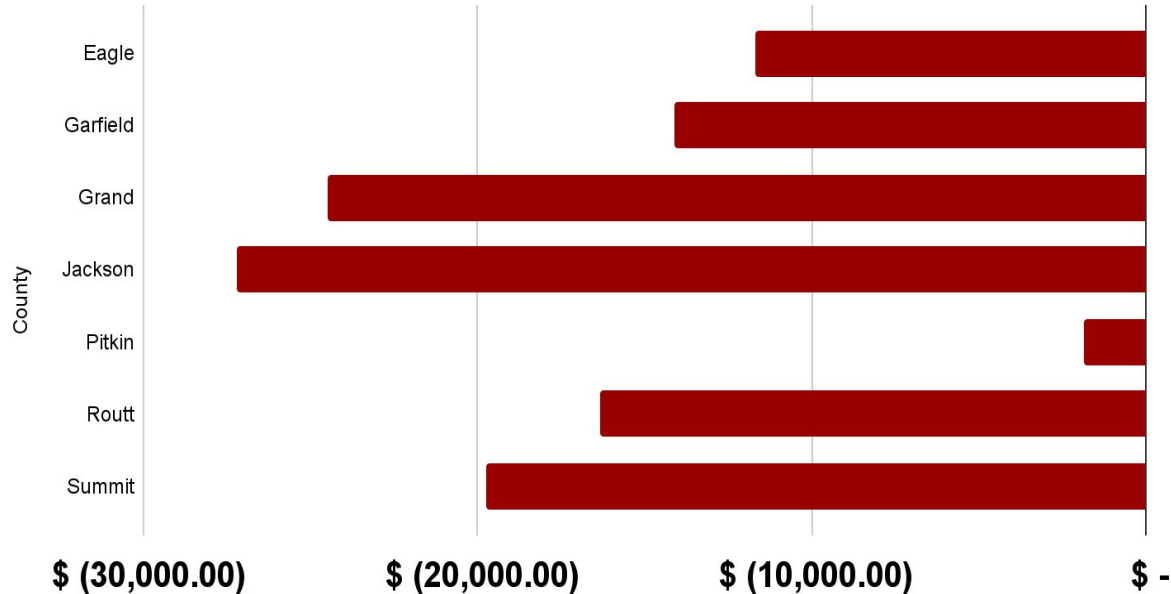
Labor Force Participation Rate Trends



NWCCOG Average Annual Wages

NWCCOG Wage Lag

QCEW; Q4 2020

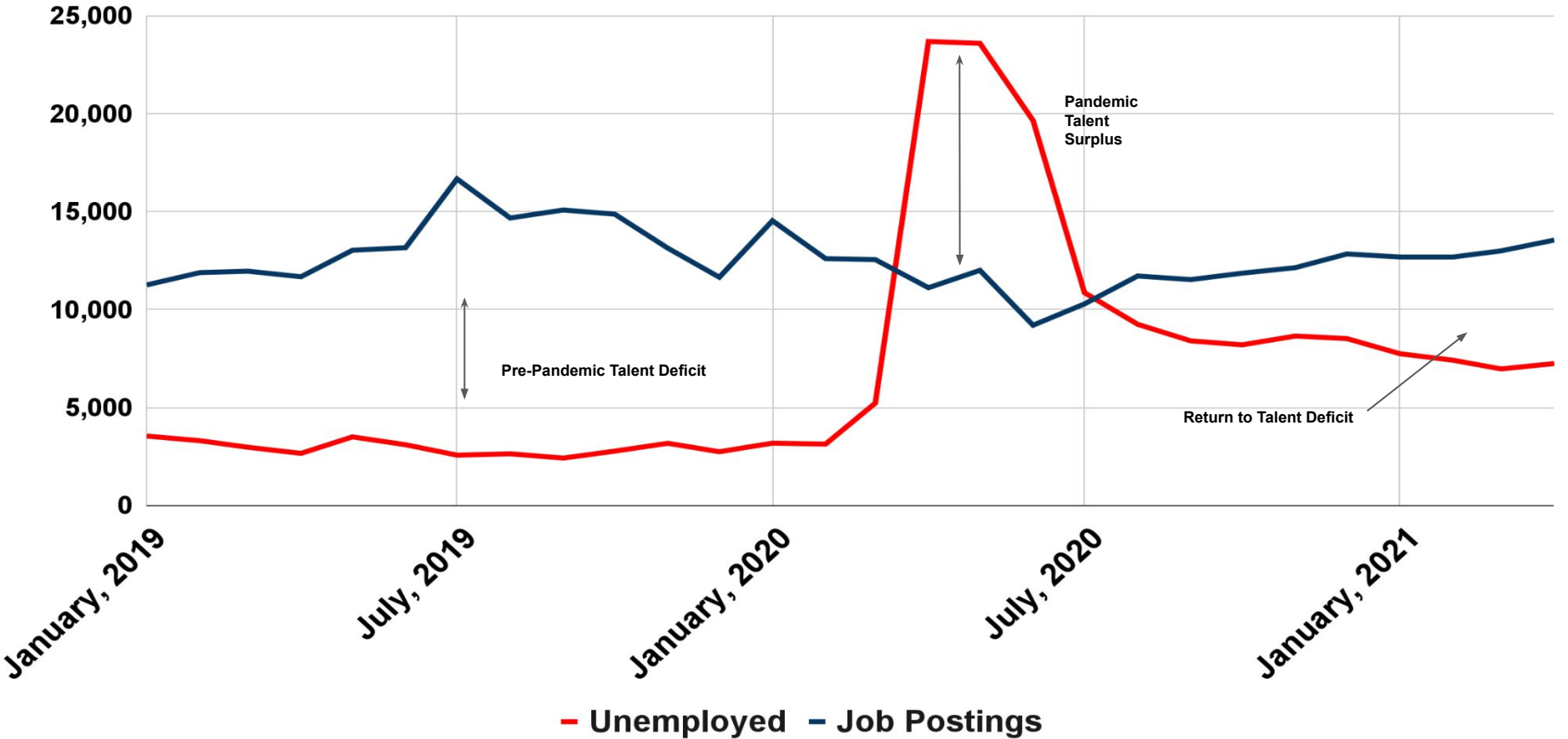


County	Average Annual Wage	Difference	Cost of Living Factor
Eagle	\$59,852.00	\$ (11,700.00)	121.7
Garfield	\$57,460.00	\$ (14,092.00)	114.2
Grand	\$47,060.00	\$ (24,492.00)	112.5
Jackson	\$44,356.00	\$ (27,196.00)	119.5
Pitkin	\$69,732.00	\$ (1,820.00)	149.1
Routt	\$55,224.00	\$ (16,328.00)	122.7
Summit	\$51,792.00	\$ (19,760.00)	120.1
Colorado	\$71,552.00		111.7

*COVID-19 has caused an increase in average QCEW wages due to impacts to front-line service industry workers

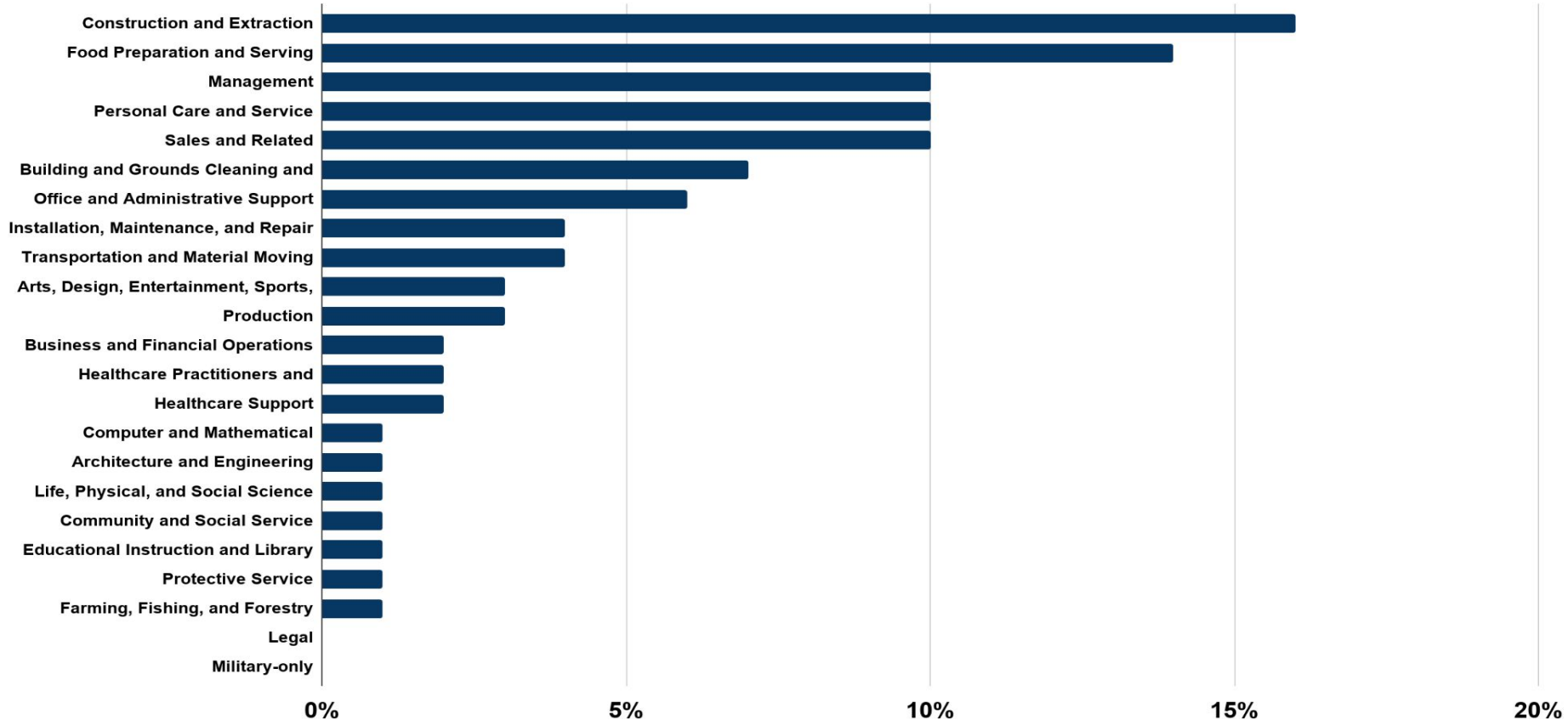
*Routt and Garfield included due to laborshed, and regional similarities

NWCCOG Talent Supply/Demand



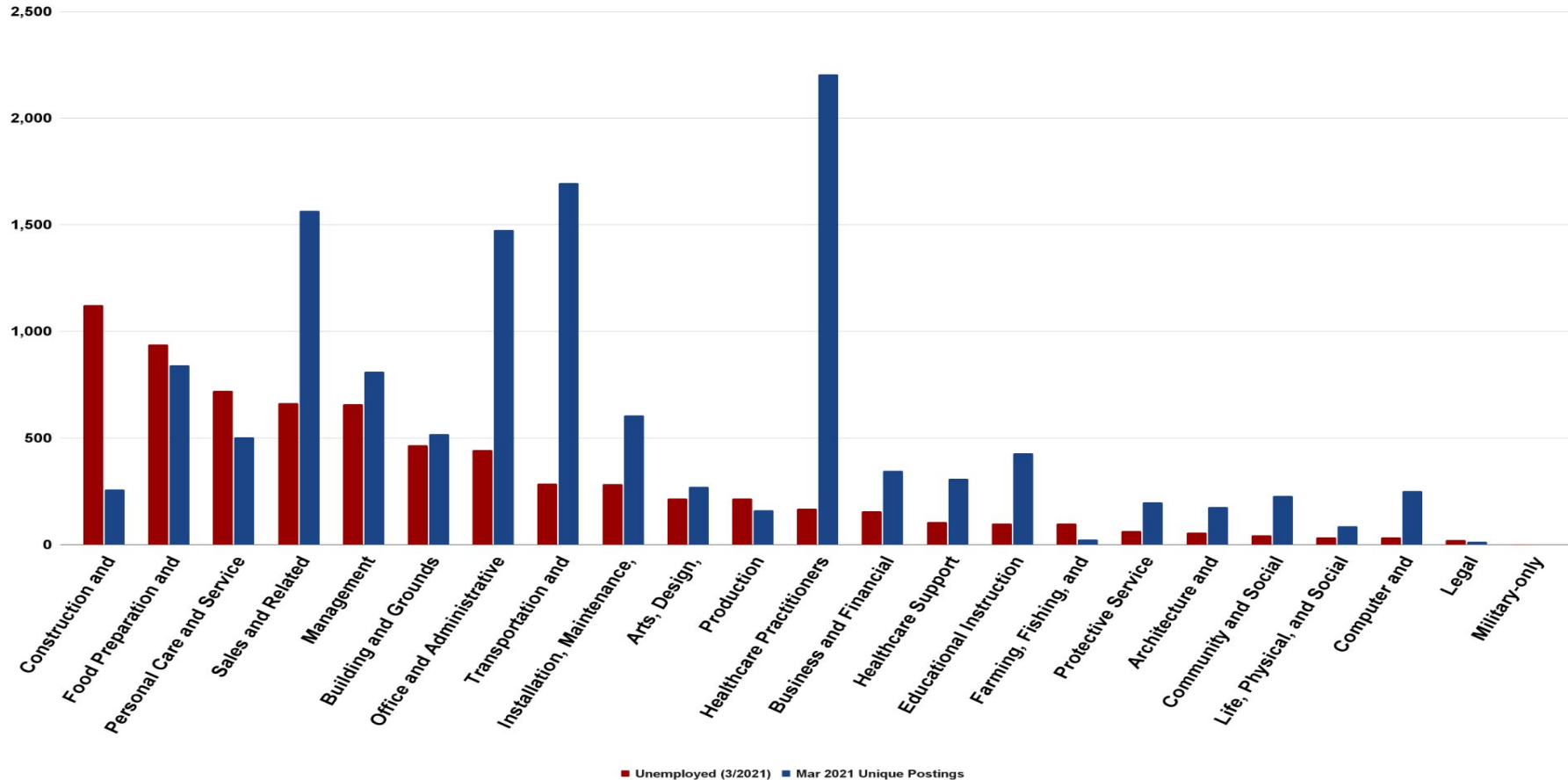
NWCCOG Occupational Unemployment

March, 2021

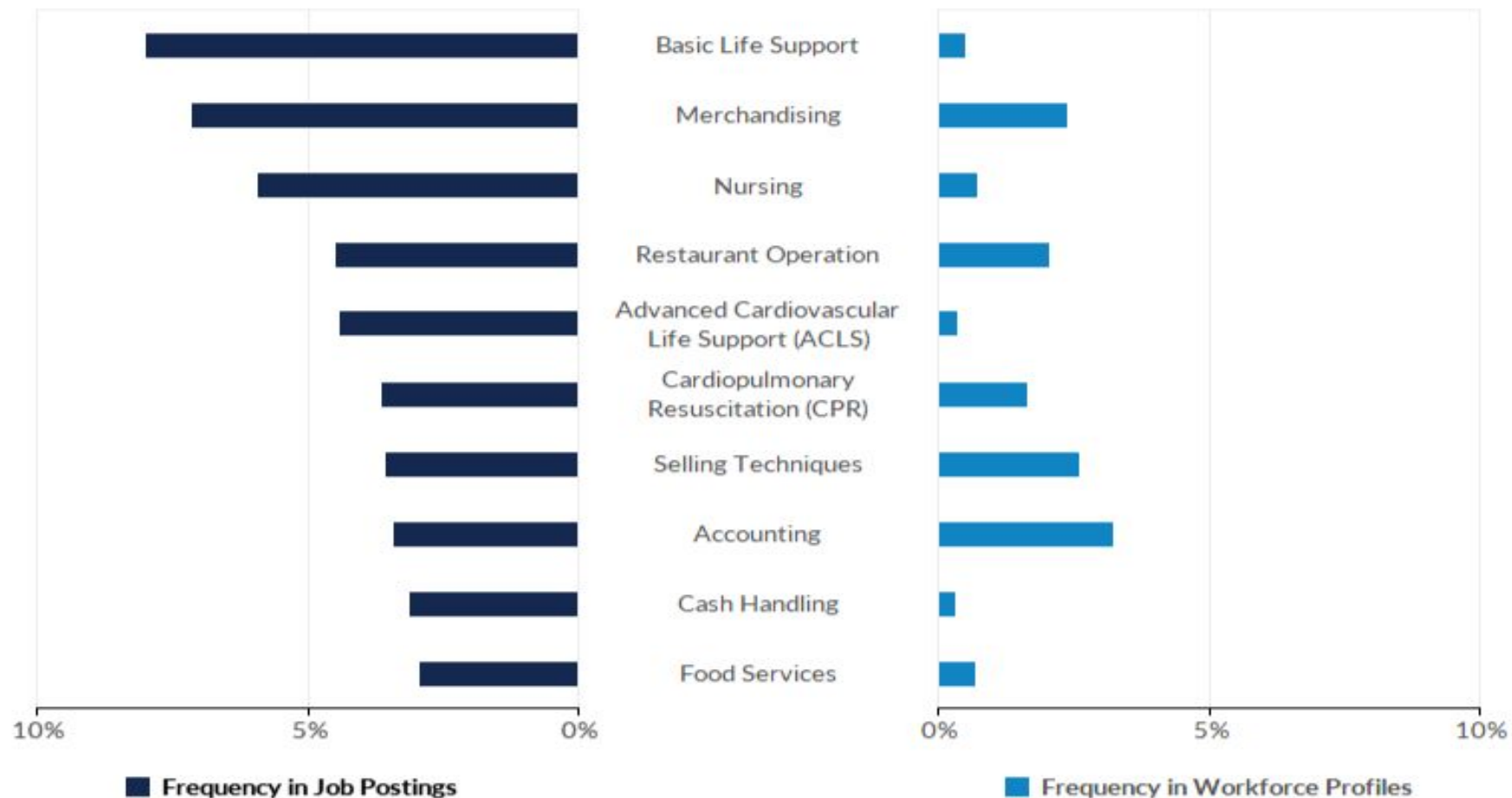


NWCCOG Occupational Supply/Demand

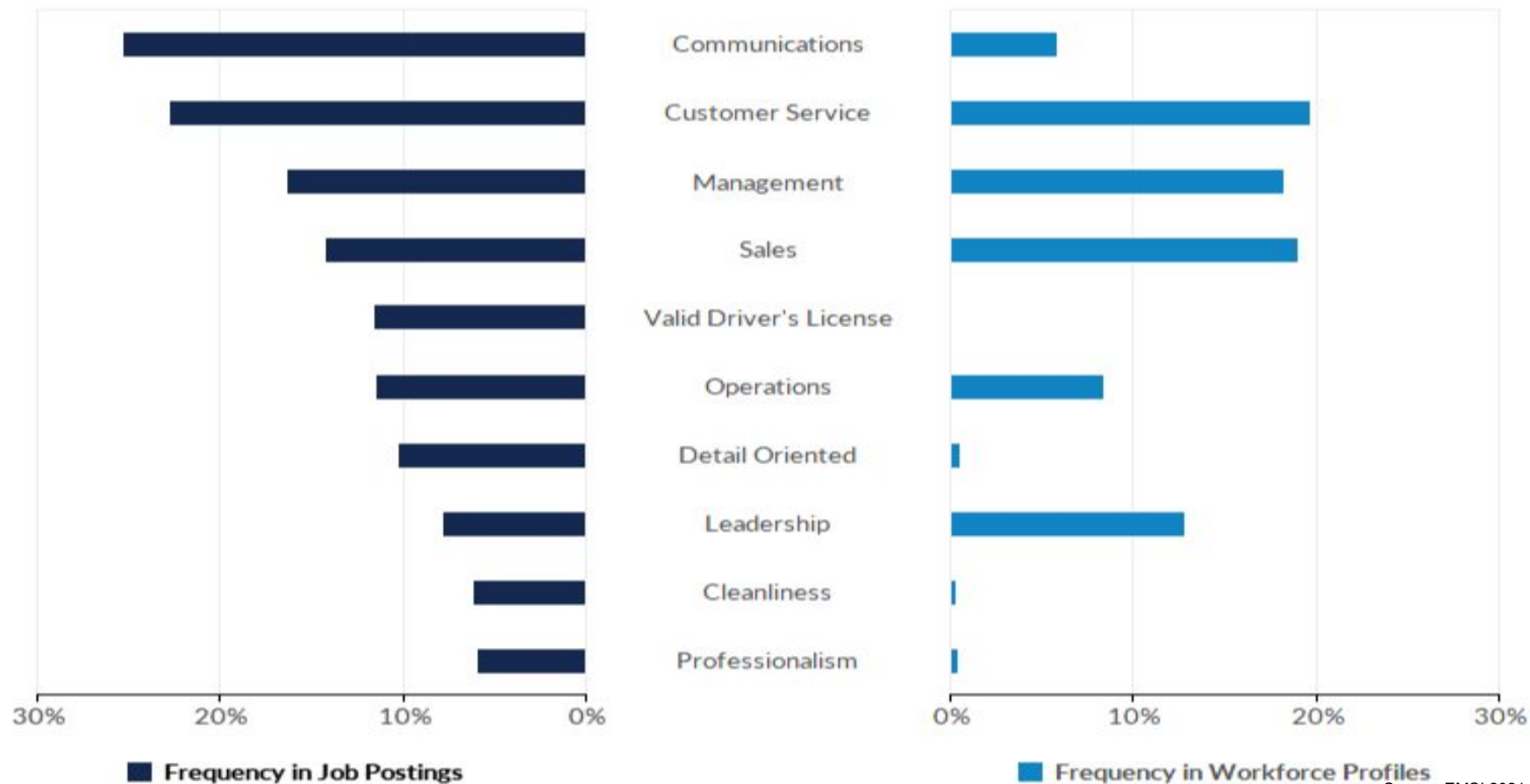
March, 2021



Top Hard Skills



Top Common Skills



Top Posted Qualifications in Online Job postings in the NWCCOG Region

Top Qualifications

Qualification	Postings with Qualification
Commercial Driver's License (CDL)	1,931
Bachelor of Science in Nursing (BSN)	211
Hazmat Endorsement	210
Licensed Practical Nurse	181
Transportation Worker Identification Credential (TWIC) Card	179
Certified Nursing Assistant	166
Associate Degree In Nursing	144
Critical Care Registered Nurse (CCRN)	134
Trauma Nurse Core Course (TNCC)	131
CDL Class B License	126

Top Occupations of Active Online Job Seekers in NWCCOG Region

Occupation (SOC)	Profiles	Percent
Chief Executives	8,715	16.12%
General and Operations Managers	2,877	5.32%
Personal Service Managers, All Other; Entertainment and Recreation Managers, Except Gambling; and Managers, All Other	2,328	4.31%
First-Line Supervisors of Office and Administrative Support Workers	1,549	2.87%
Real Estate Brokers	1,266	2.34%
Sales Managers	968	1.79%
Marketing Managers	799	1.48%
Financial Managers	777	1.44%
Registered Nurses	677	1.25%
Tutors and Teachers and Instructors, All Other	610	1.13%

Top Qualifications of Active Online Job Seekers in NWCCOG Region

Qualification	Profiles with Qualification
LEED Accredited Professional (AP)	224
Nationally Certified In Therapeutic Massage And Bodywork	184
Wilderness First Responder	178
Certified Nursing Assistant	136
Certified Public Accountant	126
ServSafe Certification	122
Professional Engineer	103
Certified First Responder	100
Series 7 General Securities Representative License (Stockbroker)	100
Wilderness First Aid	85



COLORADO
Department of
Labor and Employment

Northwest Colorado Workforce Area

Regional Business Services Team

Carolyn Tucker

970.880.4172

Carolyn.Tucker@state.co.us

*West Eagle, Garfield
and Pitkin Counties*

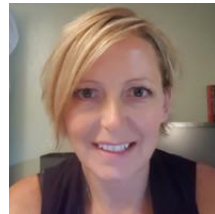


Christina Oxley

970.620.1690

Christina.Oxley@state.co.us

*Grand, Jackson, Moffat, Rio Blanco and
Routt counties*



Mark Hoblitzell

970.880.4092

Mark.Hoblitzell@state.co.us

*East Eagle, Lake,
and Summit counties*

