



USEPA Brownfield Grant Funding Programs



June 5, 2025

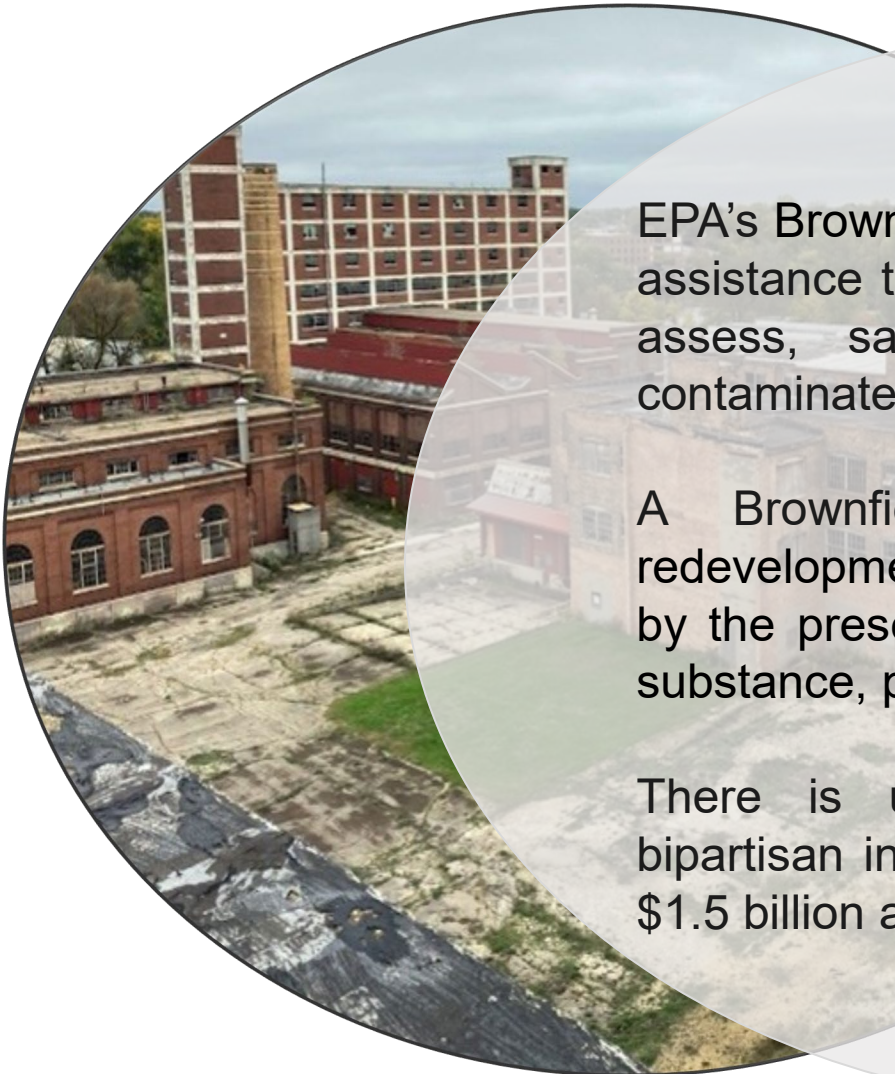
Mr. Dan B. Brown, CP, CPG



- ❑ Mr. Brown is the Founder and President of Partners.
- ❑ Partners is a full service environmental, safety and engineering consulting company.
- ❑ Helped author the original Ohio Voluntary Action Program (VAP) rules in the early 1990s.
- ❑ Nationally recognized expert in the United States Environmental Protection Agency (EPA) Brownfield grant program.
- ❑ Authored successful grant applications and executed many contracts for awarded communities.
- ❑ Spoken on multiple occasions at the National Brownfield Training Conference in various locations across the US.



Overview of US EPA Brownfield Program



EPA's Brownfield Program provides grants and technical assistance to communities, states, tribes, and others to assess, safely clean up, and sustainably reuse contaminated properties.

A Brownfield is a property, the expansion, redevelopment, or reuse of which may be complicated by the presence or potential presence of a hazardous substance, pollutant, or contaminant.

There is unprecedented funding because of the bipartisan infrastructure bill with Congress making over \$1.5 billion available over five (5) years.

Funding Cycles

Fall:
Application

Spring (the following):
Announcement

Summer:
Cooperative Agreement

Fall:
Work Begins



Grant Types

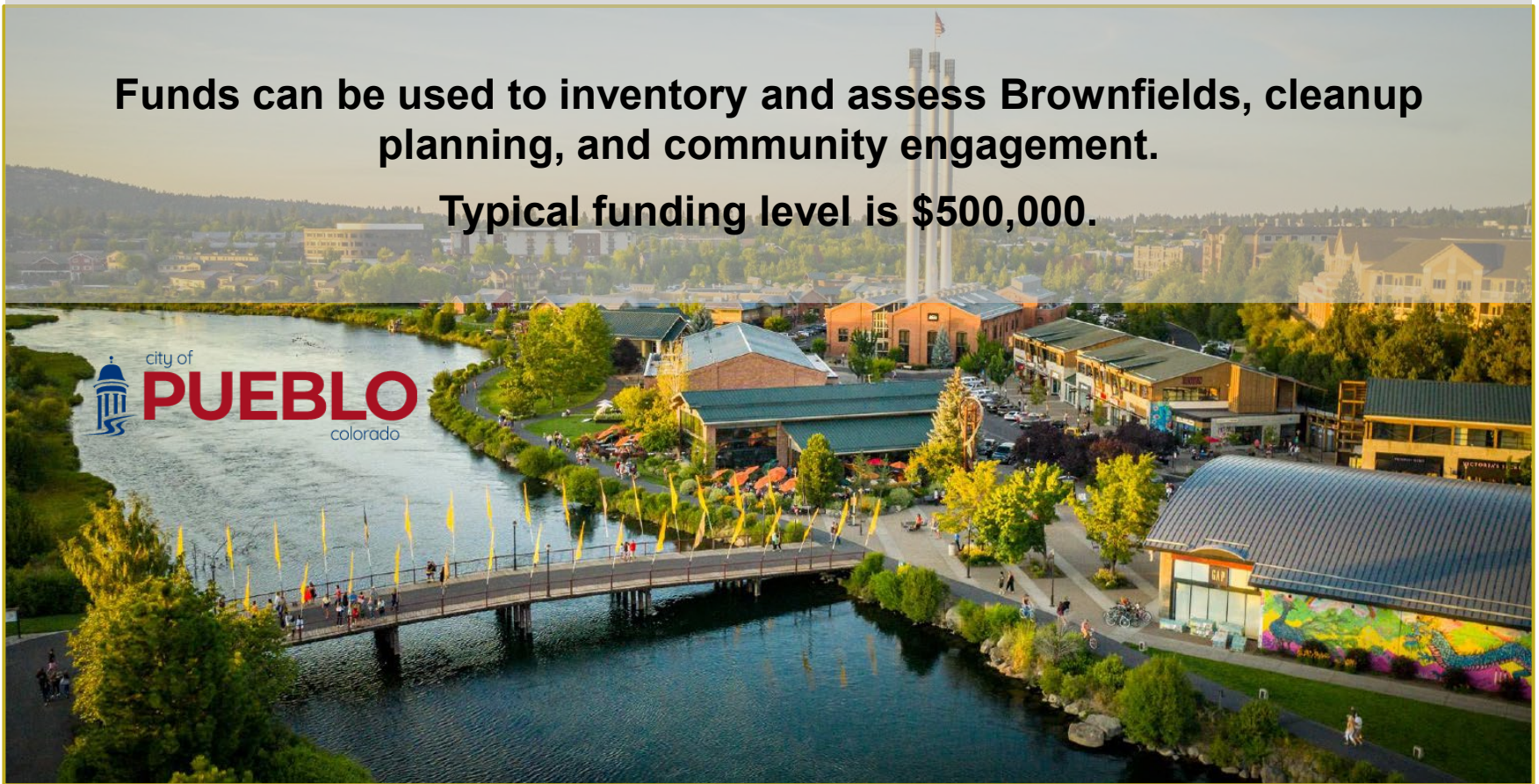
- ❑ Community- Wide Assessment
- ❑ Clean Up
- ❑ Multi-Purpose
- ❑ Revolving Loan Funds
- ❑ Coalition



Community-Wide Assessment

Funds can be used to inventory and assess Brownfields, cleanup planning, and community engagement.

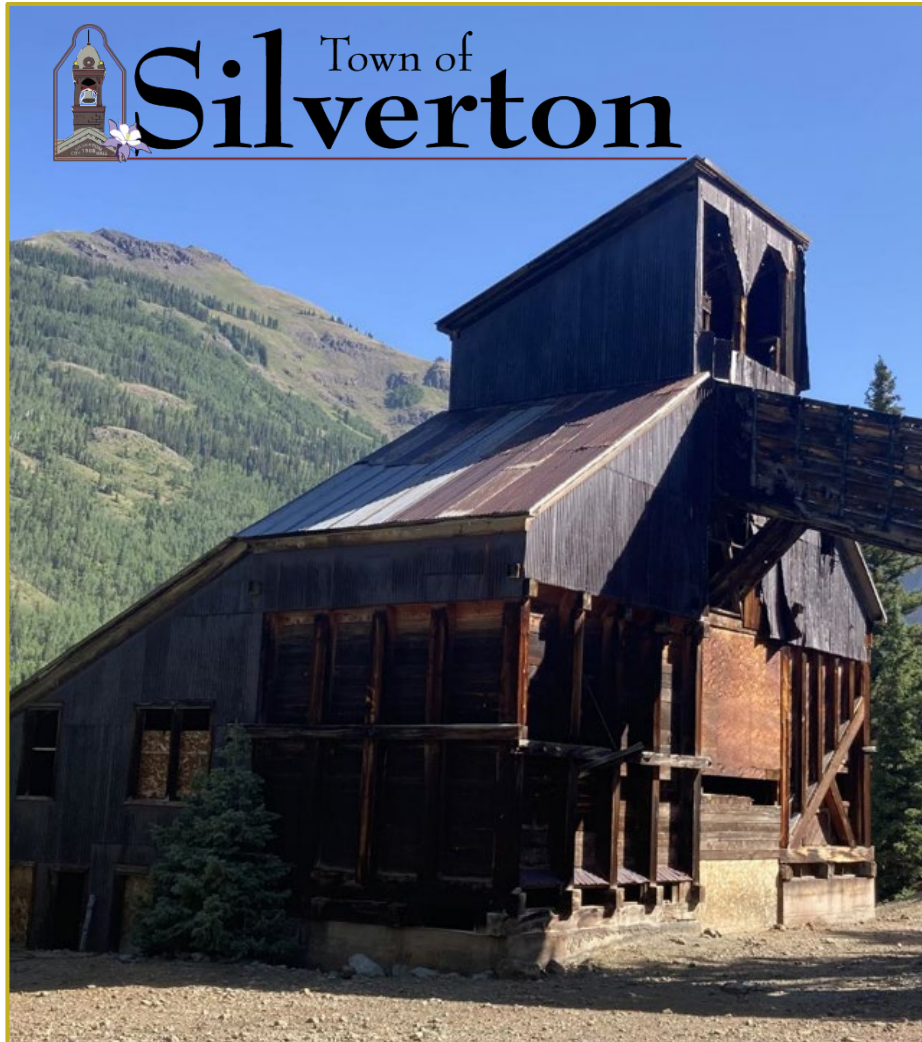
Typical funding level is \$500,000.



Clean Up



Multi-Purpose



Combines assessment and cleanup funding in one grant.

Typical funding level is \$1,000,000.

Coalition



Requires a lead entity and at least two supporting entities.

Typically covers a larger region.

Typical funding level is \$1,500,000.

Eligible tasks are same as Community-wide Assessment

Revolving Loan Funding

Used to capitalize a RLF program to provide loans and subgrants for cleanups.

Typical funding level is \$1,000,000, with availability of supplemental funding in subsequent years.



Best Practices

Start Early

Find a Champion in Your Organization to Lead This Effort.

Use Technical Assistance (KSU TAB).

Strong Community Engagement
Lean Into Prior/Existing Studies.

Questions



Dan B. Brown, CP, CPG

President

Eagle, Colorado

Tel. (800) 763-1363

Cell (216) 214-5591

www.partnersenv.com