



## **Intermountain Transportation Planning Region (IMTPR) Commission Meeting Notes**

January 17, 2025

10:00am-12:00pm

Eagle County Government-Garden Level Conference Room  
500 Broadway, Eagle, CO 81631

### **[Zoom Recording](#)**

**10:00am: Welcome/Roll Call/Quorum/Overview of the Day (Brian Pettet)**

**10:05am: Public Comments (Brian Pettet)**

**10:10am: Update on TPR Boundary Decision, IGAs, and Bylaws (Brian Pettet)**

- *The Transportation Commission has delayed the boundary change decision until further notice.*
- *IGAs and bylaws will not be approved/signed until the boundary decision has been made.*

**10:15am: Election for Chair and Vice Chair (Brian Pettet)**

- *Brian Pettet was the only member that showed interest in running for the IMTPR Chair. Greg Hall made a motion to vote for Brian as Chair for one more term. A second was made by Eric Mamula. Motion passed unanimously.*
- *Bentley Henderson was the only member that showed interest in running for the IMTPR Vice Chair. Tom Daugherty made a motion to vote for Bentley as Vice Chair. A second was made by Eric Mamula. Motion passed unanimously.*

**10:45am: [TPR Priority Project List](#) ('final project list' tab) for the 2050 Statewide Plan (Brian Pettet, Marissa Gaughan)**

- *The group would like requests for letters of support review to be 2 business days rather than 2 days.*
- *The Town of Gypsum and City of Glenwood Springs presented projects to be moved to the tier 1 project list (I-70 Airport Interchange and Intermodal Connector and South Bridge).*
- *The group voted to add the on-system portion only for the South Bridge project to the tier 2 list. Motion made by Greg Hall and a second by Tom Daugherty. Motion passed.*
- *The group decided to not move the I-70 Airport Interchange and Intermodal Connector to tier 1.*



- *The final project list was voted on through roll call of voting members. It passed with 24 Yes, 1 No, with 4 voting jurisdictions not in attendance to cast a vote.*

#### **11:35am: MMOF Funding and Extension on Application Deadline**

- *A motion was made by Tom Gosiorowski. to accept the MMOF application extension schedule only for the remaining \$875K (\$2.425M was requested by the first deadline) with a second by Tom Daugherty. The motion passed. The new schedule is below and will be sent out to the IMTPR.*
- *Revised application and decision dates:*
  - *Reopen application from January 17, 2025-March 17, 2025*
  - *Additional draft applications reviewed by CDOT: March 17-31, 2025*
  - *All final applications due to CDOT: April 15, 2025*
  - *CDOT reviews final applications before executive committee scoring begins: April 15-22, 2025*
  - *IMTPR scoring committee members score applications: April 22-May 28, 2025*
  - *IMTPR and CDOT select final projects for funding at the July 18, 2025 IMTPR meeting*

#### **11:50am: Partner Updates (All)**

- *Region 3 updates (Mark Rogers)*

#### **12:00pm: Closing and Next Steps (Brian Pettet)**

- *The remaining 3 meetings for 2025 will be held between Vail and Glenwood Springs. Dana will work on securing locations and will update the meeting invites.*
- *Senators Hickenlooper and Bennet want to support your projects! You can request letters of support at their websites:*
  - [Senator Bennet's Office Request for Letter of Support](#)
  - [Senator Hickenlooper's Office Request for Letter of Support](#)

## Tier 1 Priority Projects

Project ID	Project Name	County
1151	Glenwood Canyon	Garfield
	Vail Pass	Eagle
1157	Exit 203/Silverthorne	Summit
	Dowd Junction	Eagle
1923	Exit 97/Silt	Garfield
1953	Entrance to Aspen	Pitkin
1159	US 6/SH 9 Intersection Improvements @ Exit 205	Summit
1978	Parachute Exit 75	Garfield
1903	Vail Transit/Intermodal Site	Eagle
2015	SH82 Mid Valley Congestion Improvements	Pitkin/Eagle
2644	SH 9 Safety Improvements north of Ute Pass Rd.	Summit
0049	US 24 N of Leadville (25629) including MM 166 - 174 plus Crosswalk restriping at approx MM 175.5 - 176.5 NOTE: should add MM 174-175.	Lake
1171	New Castle Interchange Improvements Exit 105	Garfield
0053	SH139	Garfield

## Tier 2 (Does not include off-system projects)

Project ID	Project Name	County
0039	SH 9 Gap Project in Breckenridge	Summit
1954	US6/Rasor Drive safety improvements	Summit
3013	I-70 Exit 195 Safety improvements	Summit
3014	US6/Swan Mountain Road Ped/Bike Safety Improvements	Summit
1938	I-70 Airport Interchange and Intermodal Connector	Eagle
2009	SH 24 Homestake to Tennessee Pass Improvements	Eagle
2023	SH 82 Mid Valley Corridor Congestion	Eagle/Pitkin
	Hwy 6 ADA and Safety Improvements	Eagle
1231	Snowmass Transit Center	Pitkin
2390	SH 82 Town of Aspen - Mainstreet Improvements	Pitkin
3015	Brush Creek P&R to Lumberyard Multimodal Improvements	Pitkin
1228	Pitkin County Airport Reconfiguration	Pitkin
1224	ZEV Plan - Fleet, Facility Infrastructure 2026-2030	Pitkin
2023	SH 82 Pedestrian and Vehicle Underpass at Midland Avenue in Basalt	Pitkin
1232	Snowmass Owl Creek Road Roundabout Bus Stops	Pitkin
3016	SH82 & Smith Way and SH 82 & Lazy Glen Intersection Improvements	Pitkin
1998	Highway 13 - Garfield County Improvements	Garfield
3017	Highway 6 pedestrian Improvements east of Rifle	Garfield
1,212	BRT extension 27th St. to W. Glenwood	Garfield
2031	Highway 133 Roundabout at Industry Way	Garfield
2032	Highway 139 - Douglas Pass	Garfield
1207	Highway 82 GWS to El Jebel Transit Improvements	Garfield
3017	SH 82 resurfacing (25141) MM 78-85.3.	Lake
3019	Leadville (91/24 Intersection) to Climax/County Line	Lake
3020	Crosswalk restriping, Approx MM 175.5 - 176.5	Lake
3021	Address dangerous passing and speeding	Lake
	Bridge replacement	Lake
1201	Leadville North P-n-R	Lake
1202	Bus Shelters (SH 24)	Lake
1034	Expansion of Outrider bus service from Leadville to Salida	Lake
3022	Traffic Circle (SH 91 and US 24)	Lake

## Tier 3 (Includes off-system projects)

Project ID	Project Name	County
1886	Cottonwood Pass - Blue Hill Improvements	Eagle
3023	Core Transit Operations Facility	Eagle
	Avon Regional Transportation Center - Park-n-Ride	Eagle
1930	Eagle Valley Trail Completion	Eagle
1149	Eagle County Interchange Park-n-Rides/Transit Center	Eagle
1150	Countywide Fleet Electrification	Eagle
3024	UPRR ROW Acquisition	Eagle
1234	Snowmass Firehouse Bus Stop	Pitkin
1235	Snowmass Bus Storage Facility	Pitkin
2017	Structure # G-08-T SH 82 Upper Bypass Bridge Improvements	Pitkin
3025	Basalt First and Last Mile Mobility	Pitkin
3026	Snowmass Village Transit Fleet Electrification	Pitkin
3027	Snowmass Skycab Gondola Replacement	Pitkin
3028	Ruby Park Mobility Hub Improvements	Pitkin
2391	SH 82 Independence Pass	Pitkin
1223	Brush Creek P&R Improvements	Pitkin
1225	ZEV Plan - Fleet, Facility Infrastructure 2031-2050	Pitkin
2486	SH 82 BRT Efficiency Improvements	Pitkin/Eagle/Garfield
2029	Rio Grande Trail Improvements	Pitkin/Eagle/Garfield
0036	Ped/bike underpass of SH9 at 10 Mile Creek	Summit
3019	Ped safety improvements to the Hwy 9 and Fairview Roundabout	Summit
2696	Highway 82 @ Southbridge	Garfield

# IMTPR Project Prioritization Criteria

Criteria	Description
<b>Mobility and Infrastructure Resiliency</b>	The project takes into account the various travel options available to the community and seeks to optimize transportation choices to reduce traffic congestion. The project focuses on the design and operation of facilities in ways that encourage efficient movement and minimize bottlenecks. This includes integrating smart traffic management systems, optimizing parking layouts, and ensuring that transit hubs are easily accessible and well-connected to surrounding areas.
<b>Safety for All</b>	Project improves roadway safety for non-motorized users by providing a shared use path, enhancing separation from motorized vehicles or includes other countermeasures from FHWA's Proven Safety Countermeasures initiative (PSCi).
<b>Regional or Statewide Impact</b>	Projects boost economic growth, improves connectivity, or improves traffic flow within the IMTPR region.
<b>Equity</b>	Project is located in or provides benefits to Disproportionately Impacted (DI) Communities or to traditionally underserved and disadvantaged community members. This includes: <ul style="list-style-type: none"> <li>- Low-income communities</li> <li>- Communities of color</li> <li>- Housing cost-burdened communities</li> <li>- Linguistically isolated communities</li> <li>- Historically marginalized communities</li> <li>- Communities with environmental and socioeconomic impacts</li> <li>- Tribal lands</li> <li>- Mobile Home Communities</li> </ul>
<b>Quality of Life and Public Health</b>	Project enhances access to medical facilities and necessary services or to recreation areas, increases active transportation or provides other quality-of-life benefits.
<b>Economic Impact</b>	Project increases access to, from or within employment or economic centers, bolsters tourism or commerce, or decreases the burden on local resources.
<b>Cost Effectiveness</b>	Project demonstrates efficient use of resources (e.g., money, time, labor) and will improve mobility, safety, or environmental sustainability. The project delivers the maximum value, such as reducing travel times, lowering accident rates, or cutting emissions, relative to the financial investment made.
<b>Asset Management</b>	Project repairs pavement in a location that has low Drivability Life (DL) and/or address poor interstate pavement condition OR project improves bridge conditions. Maximizes system efficiencies.
<b>Local/Community Support</b>	Project is included in or supports the goals and strategies of local or regional plans. Project has broad support among affected local governments, partner agencies or vested public stakeholders, as demonstrated by letters of support and/or documented public feedback.
<b>Land Use and Growth</b>	The project aims to address land use development pressures and accommodate growing populations by improving infrastructure that supports both existing and future needs. This includes enhancing transportation networks to facilitate tourism, a key driver of the regional economy, while also addressing the housing demands that arise from population growth. The project ensures that the local populations benefit through improved access to jobs, services, and amenities, while managing the impact of tourism and development in a sustainable way that balances growth with community well-being.



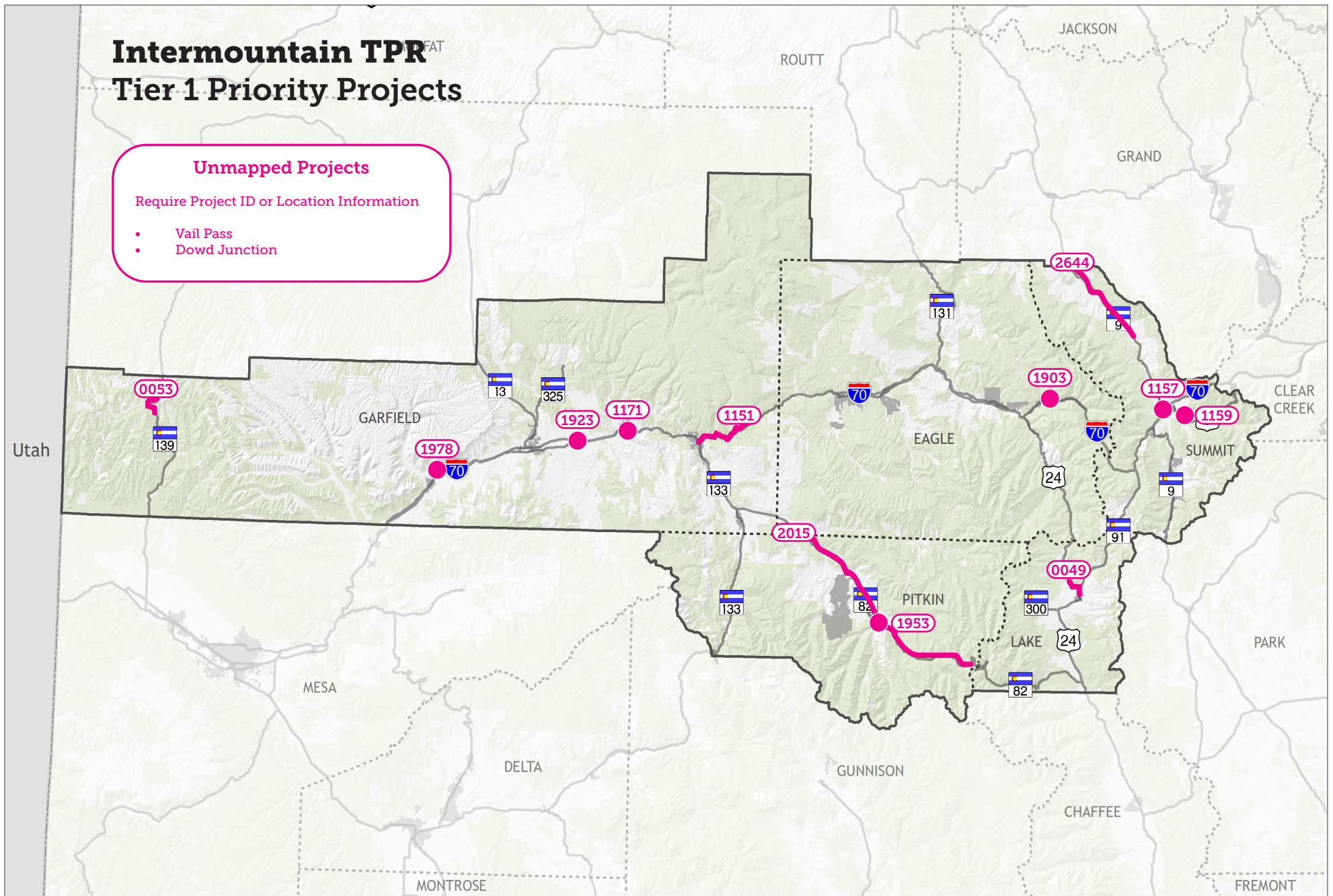


# Intermountain TPR<sup>FAT</sup> Tier 1 Priority Projects

## Unmapped Projects

Require Project ID or Location Information

- Vail Pass
- Dowd Junction





# Intermountain TPR<sup>FAT</sup> Tier 2 Priority Projects

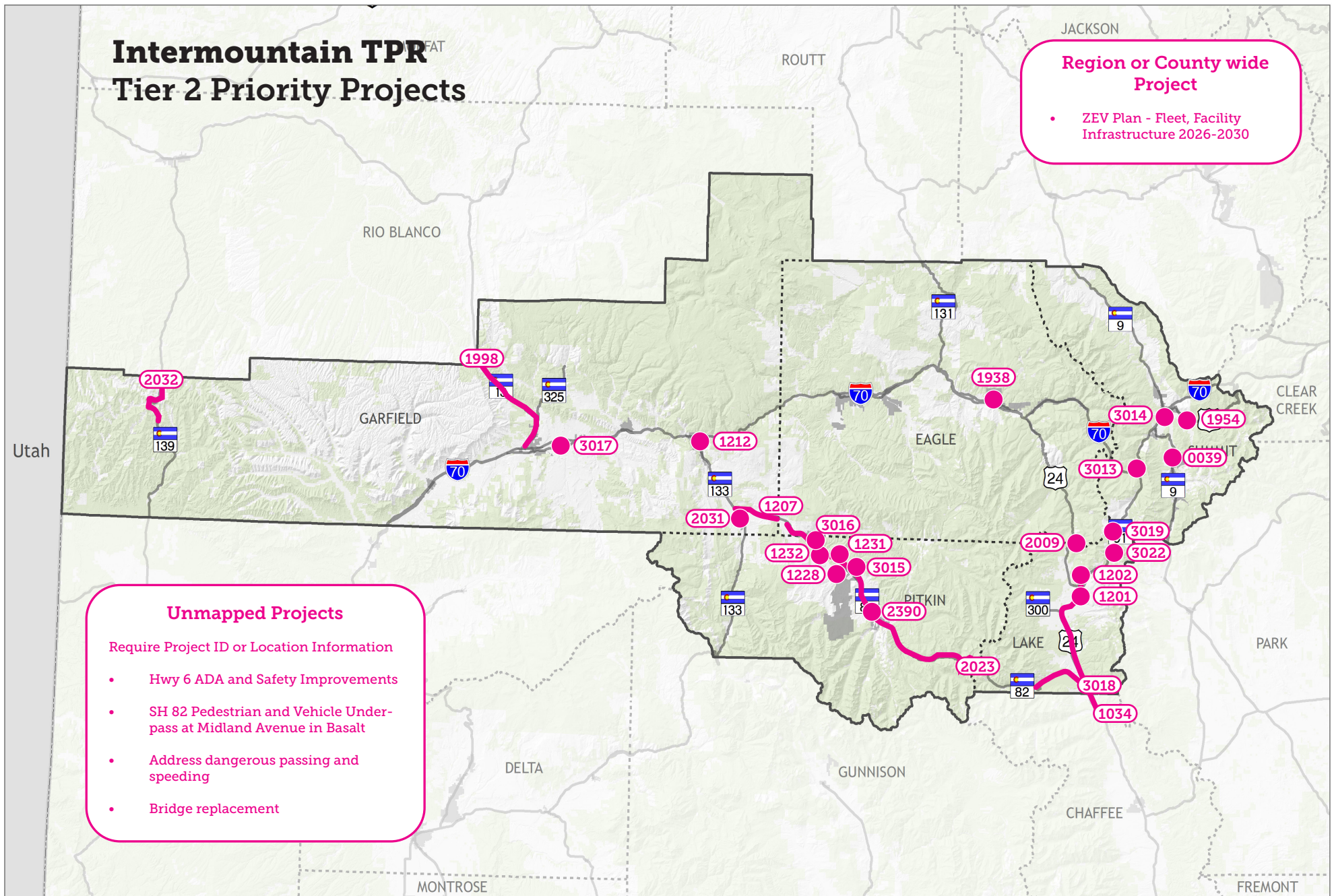
## Region or County wide Project

- ZEV Plan - Fleet, Facility Infrastructure 2026-2030

## Unmapped Projects

Require Project ID or Location Information

- Hwy 6 ADA and Safety Improvements
- SH 82 Pedestrian and Vehicle Underpass at Midland Avenue in Basalt
- Address dangerous passing and speeding
- Bridge replacement





**Intermountain TPR<sup>FAT</sup>**  
**Tier 3 Priority Projects**

**Region or County wide Project**

- Eagle Valley Trail Completion
- Countywide Fleet Electrification
- UPRR ROW Acquisition
- ZEV Plan - Fleet, Facility Infrastructure 2031-2050

**Unmapped Projects**  
 Require Project ID or Location Information

- Core Transit Operations Facility
- Avon Regional Transportation Center - Park-n-Ride
- Eagle County Interchange Park-n-Rides/Transit Center

The map displays the following project locations and IDs:

- 139 (Garfield County)
- 13 (Garfield County)
- 325 (Garfield County)
- 2696 (Garfield County)
- 2029 (Eagle County)
- 1886 (Eagle County)
- 70 (Eagle County)
- 131 (Eagle County)
- 9 (Summit County)
- 3029 (Summit County)
- 0036 (Summit County)
- 24 (Summit County)
- 91 (Summit County)
- 133 (Eagle County)
- 2486 (Eagle County)
- 2017 (Eagle County)
- 3025 (Eagle County)
- 1235 (Eagle County)
- 3027 (Eagle County)
- 1234 (Eagle County)
- 3026 (Eagle County)
- 3028 (Eagle County)
- 2391 (Eagle County)
- 1223 (Summit County)
- 24 (Lake County)
- 300 (Lake County)
- 92 (Lake County)

Counties shown: GARFIELD, EAGLE, SUMMIT, LAKE, CHAFFEE, GUNNISON, DELTA, MONTROSE, RIO BLANCO, CLEAR CREEK, PARK, FREMONT, Utah.

**Intermountain TPR<sup>FAT</sup>**  
**Tier 3 Priority Projects**

The map displays the following projects:

- Region or County wide Project:**
  - Eagle Valley Trail Completion
  - Countywide Fleet Electrification
  - UPRR ROW Acquisition
  - ZEV Plan - Fleet, Facility Infrastructure 2031-2050
- Unmapped Projects (Require Project ID or Location Information):**
  - Core Transit Operations Facility
  - Avon Regional Transportation Center - Park-n-Ride
  - Eagle County Interchange Park-n-Rides/Transit Center

Project IDs shown on the map include: 1886, 2029, 2486, 2017, 3025, 1235, 3027, 1234, 3026, 3028, 2391, 1223, 2696, 139, 13, 325, 131, 9, 3029, 0036, 91, 300, 24, 133, 13, 2, 12.

- [illegible]

**Intermountain TPR<sup>FAT</sup>**  
**Tier 3 Priority Projects**

**Region or County wide Project**

- Eagle Valley Trail Completion
- Countywide Fleet Electrification
- UPRR ROW Acquisition
- ZEV Plan - Fleet, Facility Infrastructure 2031-2050

**Unmapped Projects**  
 Require Project ID or Location Information

- Core Transit Operations Facility
- Avon Regional Transportation Center - Park-n-Ride
- Eagle County Interchange Park-n-Rides/Transit Center

The map displays the following project locations and identifiers:

- 139 (Garfield County)
- 13 (Garfield County)
- 325 (Garfield County)
- 2696 (Garfield County)
- 2029 (Garfield County)
- 1886 (Eagle County)
- 70 (Eagle County)
- 131 (Eagle County)
- 9 (Summit County)
- 3029 (Summit County)
- 0036 (Summit County)
- 24 (Summit County)
- 91 (Summit County)
- 133 (Eagle County)
- 2486 (Eagle County)
- 2017 (Eagle County)
- 3025 (Eagle County)
- 1235 (Eagle County)
- 3027 (Eagle County)
- 1234 (Eagle County)
- 3026 (Eagle County)
- 3028 (Eagle County)
- 2391 (Lake County)
- 1223 (Lake County)
- 24 (Lake County)
- 300 (Lake County)
- 92 (Lake County)

Counties shown: Garfield, Eagle, Summit, Lake, Delta, Gunnison, Chaffee, Montrose, Park, Clear Creek, Rio Blanco, Routt, Utah, and Fremont.

**Intermountain TPR<sup>FAT</sup>**  
**Tier 3 Priority Projects**

**Region or County wide Project**

- Eagle Valley Trail Completion
- Countywide Fleet Electrification
- UPRR ROW Acquisition
- ZEV Plan - Fleet, Facility Infrastructure 2031-2050

**Unmapped Projects**  
 Require Project ID or Location Information

- Core Transit Operations Facility
- Avon Regional Transportation Center - Park-n-Ride
- Eagle County Interchange Park-n-Rides/Transit Center

The map displays the following project locations and IDs:

- 139 (Garfield County)
- 13 (Garfield County)
- 325 (Garfield County)
- 2696 (Garfield County)
- 2029 (Eagle County)
- 1886 (Eagle County)
- 70 (Eagle County)
- 131 (Eagle County)
- 9 (Summit County)
- 3029 (Summit County)
- 0036 (Summit County)
- 24 (Summit County)
- 91 (Summit County)
- 133 (Eagle County)
- 2486 (Eagle County)
- 2017 (Eagle County)
- 3025 (Eagle County)
- 1235 (Eagle County)
- 3027 (Eagle County)
- 1234 (Eagle County)
- 3026 (Eagle County)
- 3028 (Eagle County)
- 2391 (Eagle County)
- 1223 (Summit County)
- 24 (Lake County)
- 300 (Lake County)
- 92 (Lake County)

Counties shown: GARFIELD, EAGLE, SUMMIT, LAKE, CHAFFEE, GUNNISON, DELTA, MONTROSE, RIO BLANCO, CLEAR CREEK, PARK, FREMONT, Utah.

- 
- Intermountain TPR<sup>FAT</sup>**  
**Tier 3 Priority Projects**
- Region or County wide Project**
- Eagle Valley Trail Completion
  - Countywide Fleet Electrification
  - UPRR ROW Acquisition
  - ZEV Plan - Fleet, Facility Infrastructure 2031-2050
- Unmapped Projects**  
 Require Project ID or Location Information
- Core Transit Operations Facility
  - Avon Regional Transportation Center - Park-n-Ride
  - Eagle County Interchange Park-n-Rides/Transit Center
- The map displays the following project locations and IDs:
- 139 (Garfield County)
  - 13 (Garfield County)
  - 325 (Garfield County)
  - 2696 (Garfield County)
  - 2029 (Eagle County)
  - 1886 (Eagle County)
  - 70 (Eagle County)
  - 131 (Eagle County)
  - 9 (Summit County)
  - 3029 (Summit County)
  - 0036 (Summit County)
  - 24 (Summit County)
  - 91 (Summit County)
  - 133 (Eagle County)
  - 2486 (Eagle County)
  - 2017 (Eagle County)
  - 3025 (Eagle County)
  - 1235 (Eagle County)
  - 3027 (Eagle County)
  - 1234 (Eagle County)
  - 3026 (Eagle County)
  - 3028 (Eagle County)
  - 2391 (Eagle County)
  - 1223 (Summit County)
  - 24 (Lake County)
  - 300 (Lake County)
  - 92 (Lake County)
- Counties shown: GARFIELD, EAGLE, SUMMIT, LAKE, CHAFFEE, GUNNISON, DELTA, MONTROSE, RIO BLANCO, CLEAR CREEK, PARK, FREMONT, Utah.