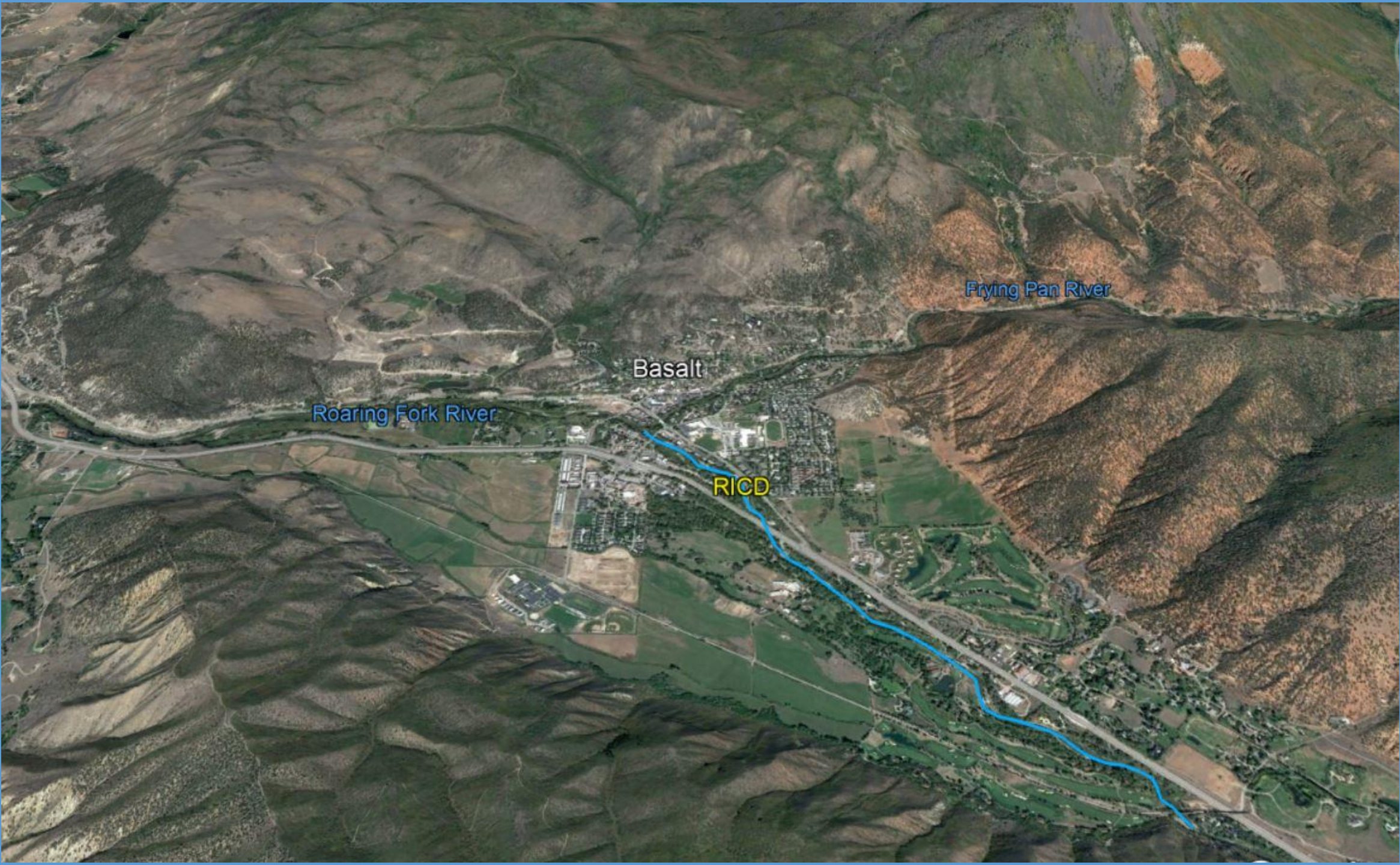




Basalt Whitewater Park  
Lisa MacDonald and Lisa Tasker







Roaring Fork River

Basalt

RICD

Frying Pan River





RICD



# The Pitkin County Recreational In-Channel Diversion Water Right



PERIOD	DATES	FLOW(cfs)
1	Apr 15 - May 17	240
2	May 18 - Jun 10	380
3	Jun 11 - Jun 25	1,350
4	Jun 26 - Aug 20	380
5	Aug 21 - Labor Day	240

\* The Pitkin County RICD Water right required construction of two wave structures at the Pitkin County Healthy Rivers Whitewater Park in Basalt. This graphic depicts the maximum amounts of water that could be called in a calendar year. Colorado water court issued the absolute decree recognizing this water right has been perfected, or made real, on November 22, 2020 with a priority date of December 30, 2010.

— Median daily streamflow in the Roaring Fork River Near Emma, CO.  
SOURCE: USGS Stream-flow Station #09081000

C. Source of water: Roaring Fork River, tributary to the Colorado River.

D. Appropriation Date: December 30, 2010.

E. Rates of Flow:

Period	Flow Rate (cfs)	Experience Level
April 15 – May 17	240	Blue, Upper Structure
May 18 – June 10	380	Green, Lower Structure
June 11 – June 25	1,350	Blue, Lower Structure
June 26 – Aug 20	380	Green, Lower Structure
Aug 21 – Labor Day	240	Blue, Upper Structure

F. Uses: Recreational uses, including all beneficial uses associated with RICD water rights as permitted under Colorado law, including, but not limited to, non-motorized boating such as kayaking, canoeing, rafting, tubing, floating, and paddling. The Pitkin County RICD is also used for incidental fishing, wildlife habitat, and piscatorial uses, but no water right for these uses was confirmed by the decree in Case No. 10CW305.





Basalt Whitewater Park  
Lisa MacDonald and Lisa Tasker

