

Town of Crested Butte

River Access Projects

QQ PRESENTATION JUNE 15, 2022

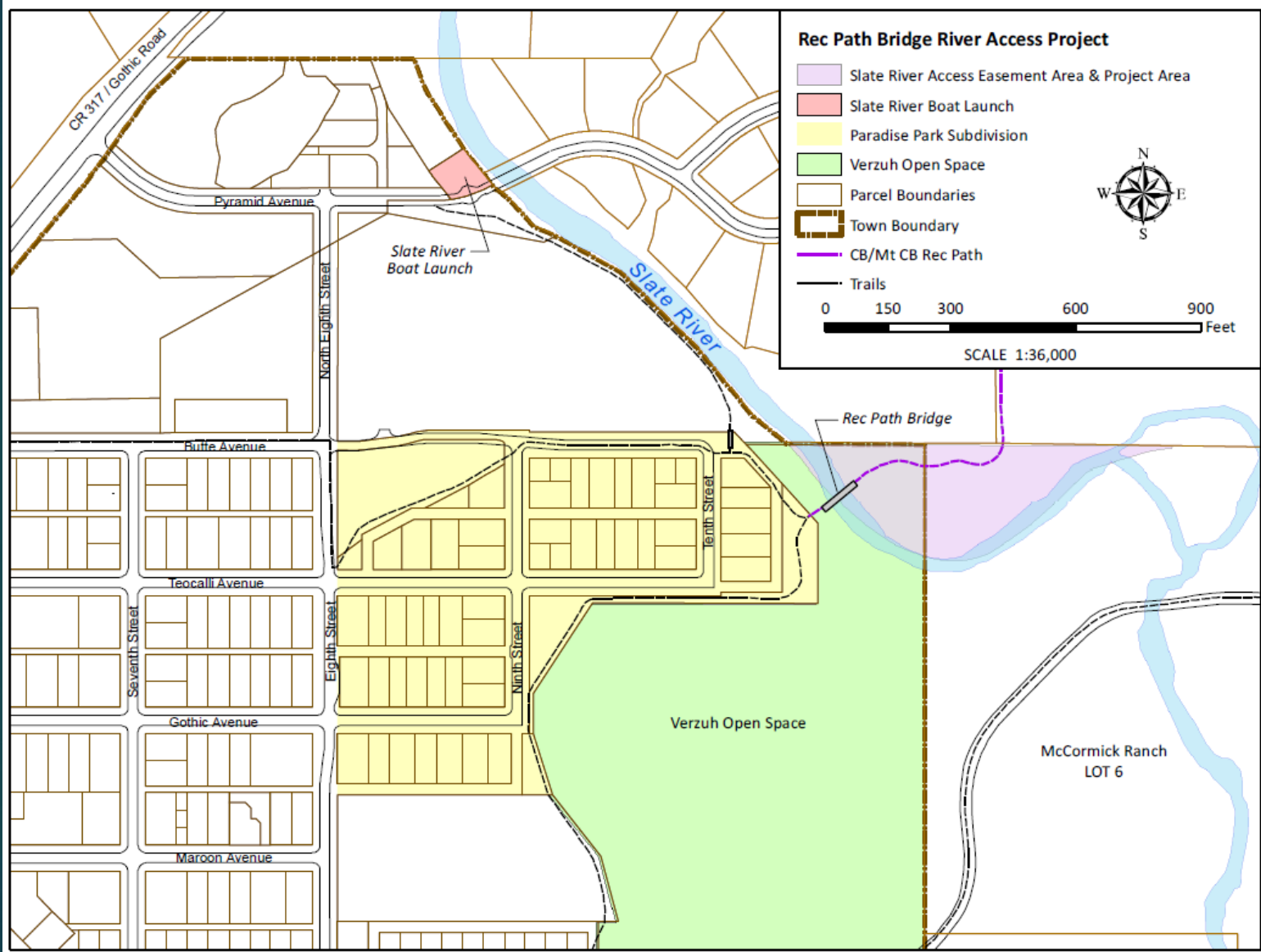


SLATE RIVER BOAT LAUNCH

PROJECT LOCATION



Location Map



Site Context & Existing Conditions





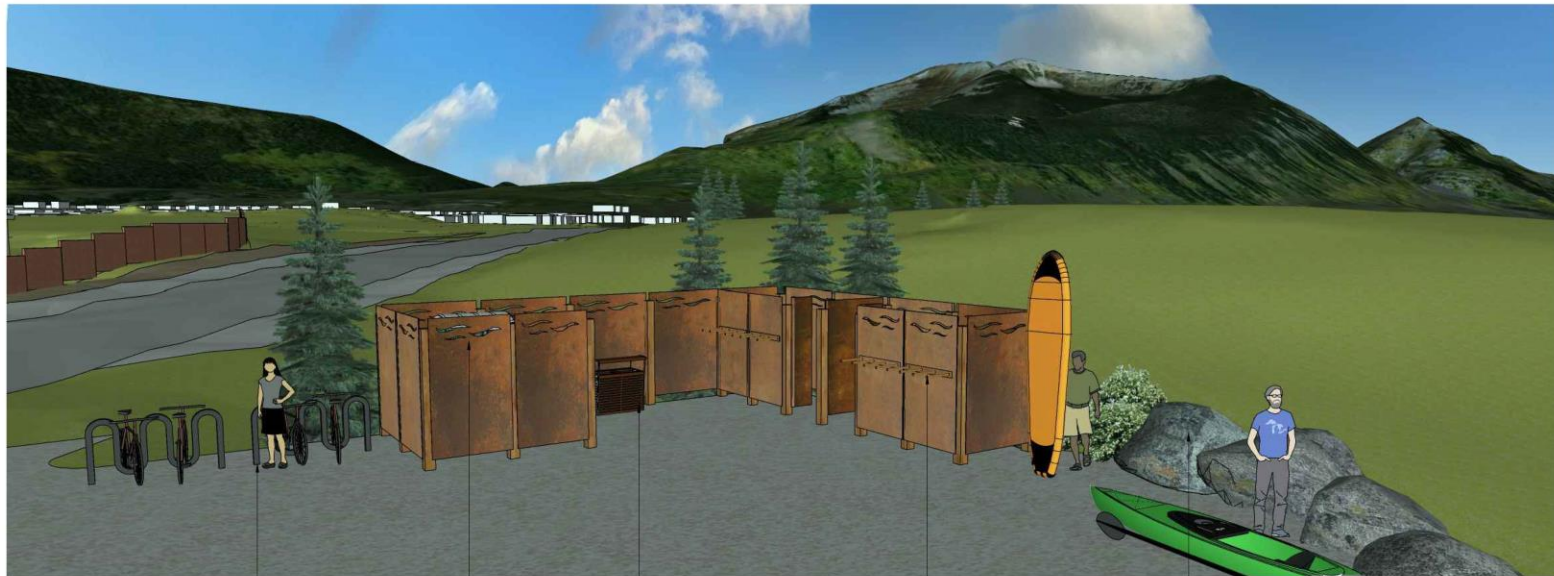






Slate River Boat Launch





1

2

3

4

5



BIKE RACKS AS A SCULPTURAL ELEMENT



SCREEN WALL AS A CANVAS FOR ARTISTIC CUT OUTS OR MURAL



TRASH RECEPTACLE AS A CANVAS FOR ARTWORK



PADDLE BOARD RACKS AS SCULPTURAL ELEMENTS



PILE AND SEATING BOULDERS AS SCULPTURAL ELEMENTS OR CANVAS FOR MURAL

sproutstudio
growing community • preserving resources
PO Box 4184
523 Riverland Dr. #38
Crested Butte, CO 81224
t: 970.349.8959
www.sprout-studio.net

1" = 1' ACTUAL

IF THE ABOVE DIMENSION DOES NOT MEASURE
OR FIT EXACTLY, THE DRAWING HAS
BEEN ENLARGED OR REDUCED

SLATE RIVER BOAT LAUNCH

CRESTED BUTTE, CO



ISSUED
FOR REVIEW

NOT FOR
CONSTRUCTION

SS PROJECT NO. 20-026
DRAWN BY: BMM
APPROVED BY: BMM
ISSUE DATE: APRIL 21, 2021

PLAN ISSUES & REVISIONS	
NO.	DESCRIPTION
1	Submittal Design
2	BOCAR Review
3	BOCAR Review Revisions
4	Red Seal

CONSTRUCTION REVISIONS

NO.	DESCRIPTION	DATE

PUBLIC ART
OPPORTUNITIES

L2.0



Slate River

Boat Launch















Rec Path Bridge River Access & Restoration Project







OWNER:
TOWN OF CRESTED BUTTE
ATTN: JANNA HANSEN
507 MAROON AVENUE
CRESTED BUTTE, CO 81204
970.340.5306 x 110



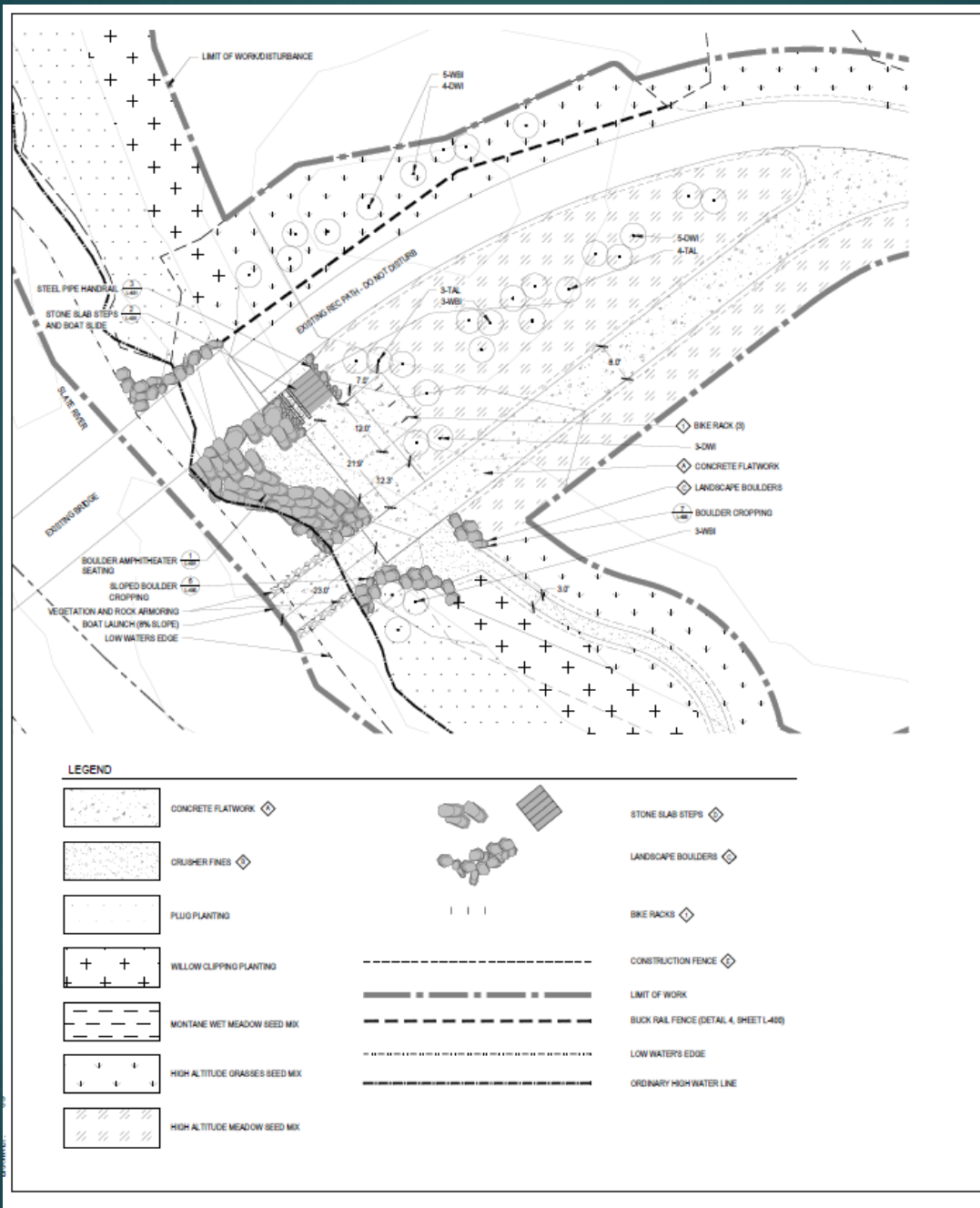
DATE:
03/11/22 BID SET

SHEET TITLE:
LANDSCAPE
PLAN

L-300



CHECKED BY: TAEG
DRAWN BY: CG



Thank you!

