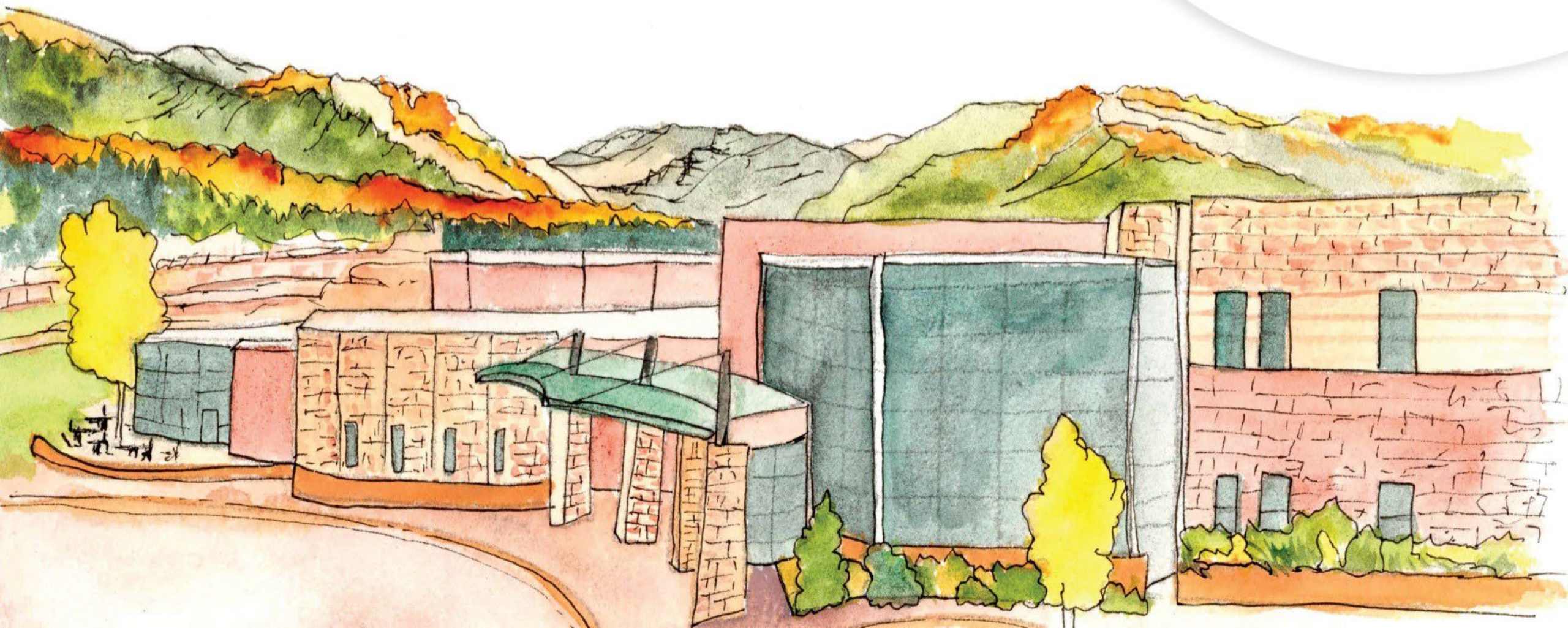


Our Story



ASPEN VALLEY

HOSPITAL





Our Hospital

- Established 1891 as Citizens Hospital
- Special District
- Critical Access Hospital
- Level III Trauma Center

Our Numbers

- 500 Employees
- \$45 M Payroll
- \$125 M Net Patient Revenue
- 60% Commercial Payer Mix

Our Community

- Pitkin County
- 18,000 population
- Large growth
- Tourism impacts



ASPEN VALLEY
HOSPITAL

Core Values

Patient Centered

We are passionate about patient care, creating positive impressions on a consistent basis and exceeding our patients' expectations.

We are vigilant about the little things that make a big difference.

Accountability

We take responsibility for our actions, abide by the hospital's guiding philosophies and policies, and follow through on our commitments.

We take personal pride and ownership in the quality of care and service provided.

Our Mission

To deliver extraordinary healthcare in an environment of excellence, compassion and trust.

Respect for Others

We honor and value our colleagues and our customers.

We talk to people and listen to their ideas.

Integrity

We exhibit character and conviction, demonstrating the utmost honesty and ethical behavior.

Our beliefs correspond with our actions.

Teamwork

We work collaboratively and create a synergy that enhances the experiences of all involved.

We seek to maximize everyone's potential, commitment, and creativity.

Our Vision

To be the leader in fostering our community as the healthiest in the nation.

Facilities

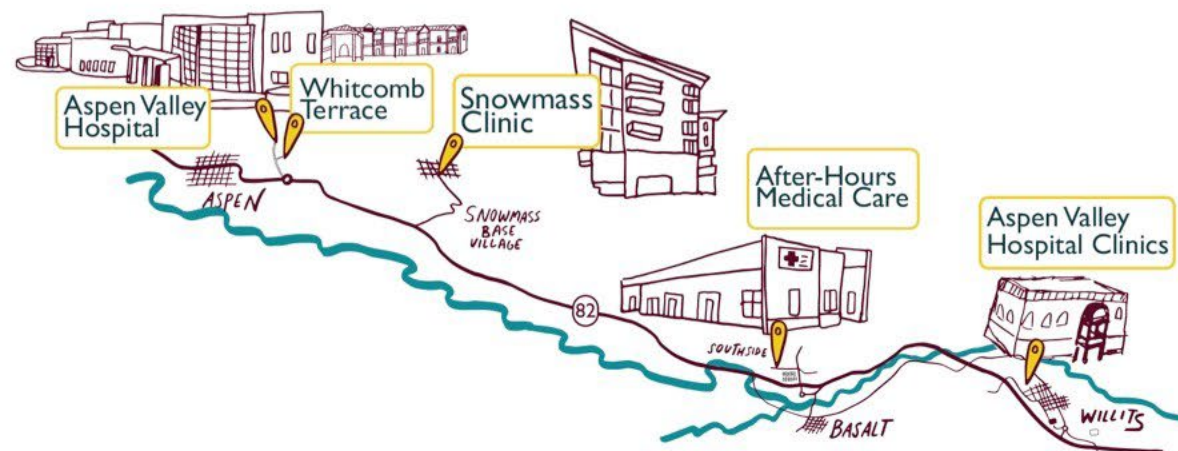
Built in 1977 with 49 beds

Current: 25 licensed beds

- 5 post-partum (plus 4 LDR's)
- 16 general inpatient (all private)
- 4 ICU

4th and Final Phase of MFP to be complete in 2023.

Offsite Locations



Scope of Services

Acute Inpatient Care

Surgical (SDS and inpatient)

- Orthopedics
- General surgery/trauma
- GYN
- ENT
- Ophthalmology

Swing beds

Cardiopulmonary Rehabilitation

Outpatient Diagnostics

Rehabilitative Services (PT, OT, ST)

Emergency/Level III Trauma

Obstetrics (Level I Nursery)

Nutritional Counseling

Cardiopulmonary Services





ASPEN VALLEY
HOSPITAL

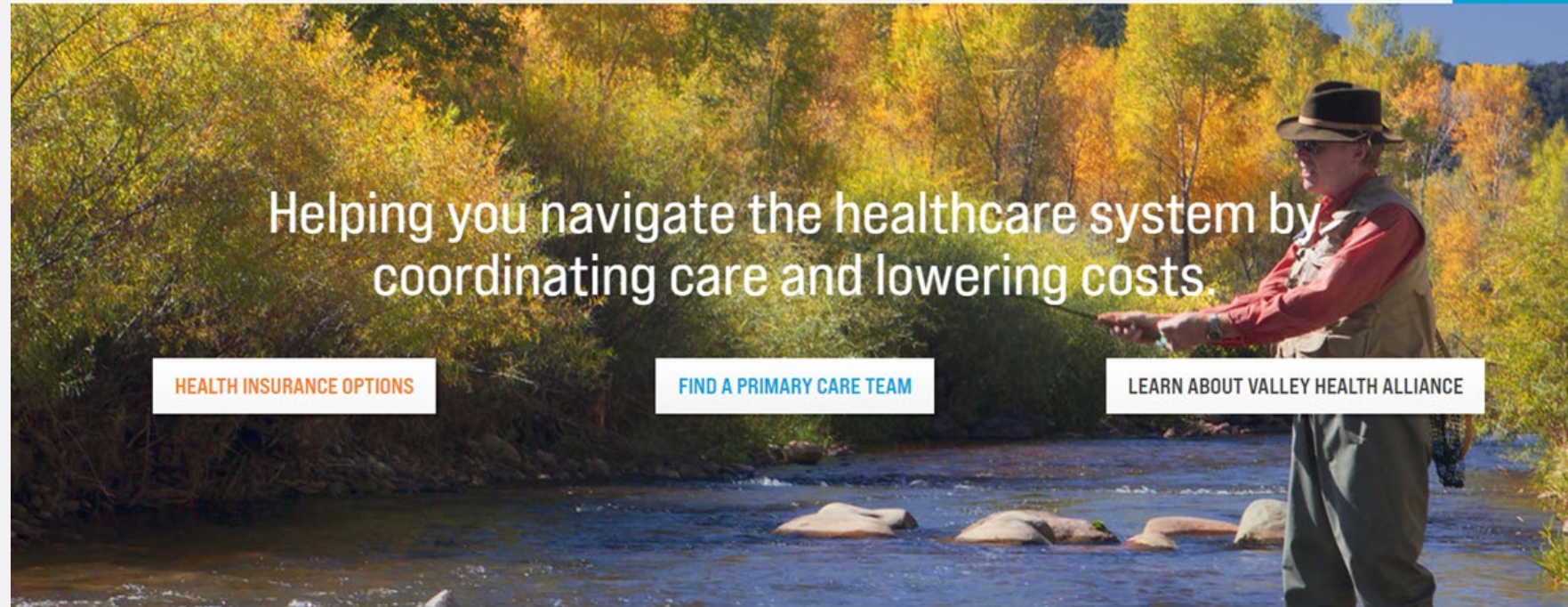


YOUR HEALTH. OUR PRIORITY.

[OUR STORY](#) [PRIMARY CARE NETWORK](#) [VARIOUS INSURANCE OFFERINGS](#) [FAQ](#) [RESOURCES](#)



[LOGIN](#)



Helping you navigate the healthcare system by coordinating care and lowering costs.

[HEALTH INSURANCE OPTIONS](#)

[FIND A PRIMARY CARE TEAM](#)

[LEARN ABOUT VALLEY HEALTH ALLIANCE](#)

Transformation to a Network of Care

We are not just a hospital anymore:

- We focus on the whole person, *every* person in our community.
- We have services where they live and work.
- We partner with hospitals, providers, employers and payers.
- We are a part of the solution.

