

EARLY CHILDHOOD OPTIONS

NWCCOG Regional Economic Summit
May 2025

CATHERINE SCHAAF, EXECUTIVE DIRECTOR





AGENDA

ECO Overview

State and federal funding landscape

Local funding landscape

Short-term funding discussions

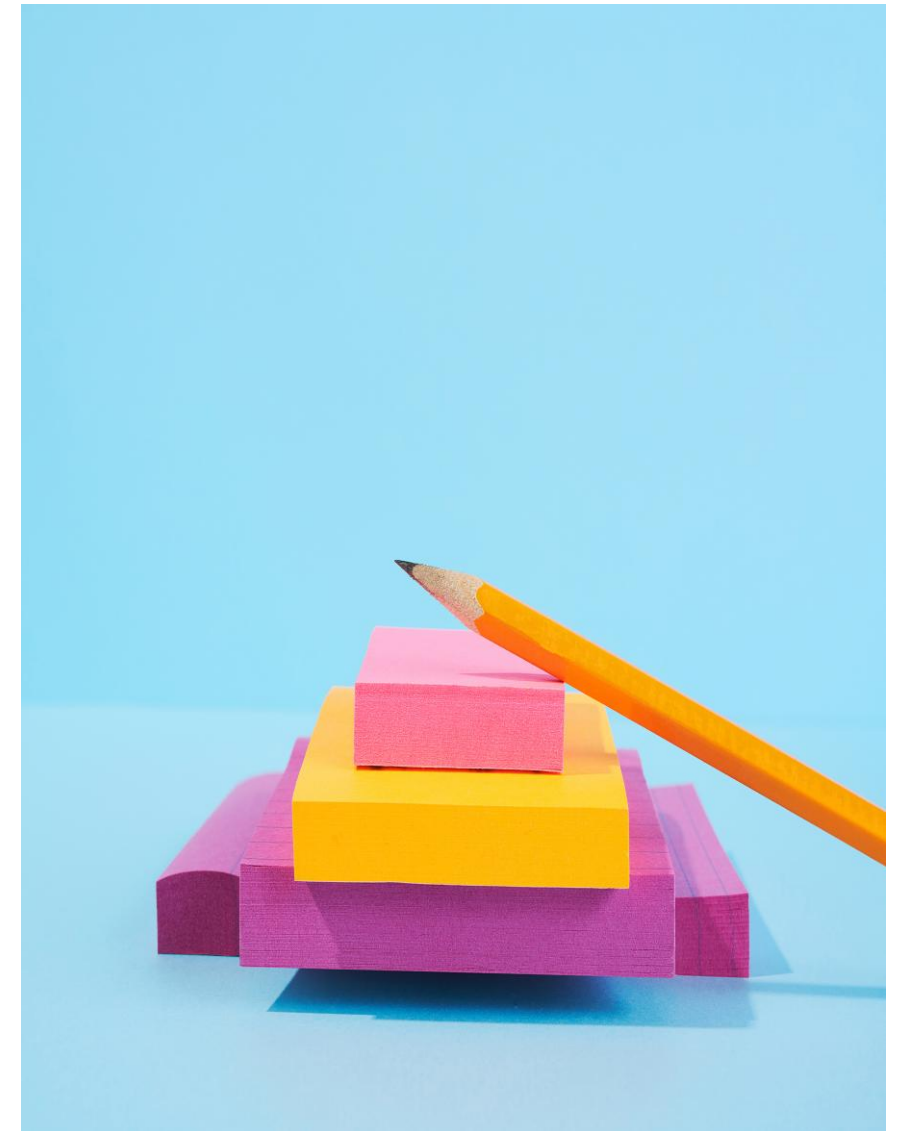
2025 – 2026 Applications

Next Steps

ECO OVERVIEW



- Improving the quality, availability and affordability of early childhood education in Summit County
 - Head Start 0-5
 - Quality Initiatives
 - Tuition Assistance
- Currently 13 FTE
- For every dollar invested in Early Childhood has a ROI of \$13
- 80% of brain development occurs within the first three years of a child's life



STATE AND FEDERAL FUNDING LANDSCAPE

CCCAP

Currently serving 106 children

Total funding: \$517,447

- Currently on a freeze
- State funding unclear at this time
- Current SPK guidelines do not account for CCCAP's inability to determine eligibility for assistance

HEAD START

Currently serving 25 EHS children and 35 HS Children. Two separate grants with SCG and Clayton(11 EHS children)

Total funding: \$1.1. million for 2025

- Funded through October by continuing resolution passed earlier this month
- Future applications that promote or take part in DEI initiatives will not be approved
- County staff providing additional support during Head Start Director transition

UNIVERSAL PRE-K

Currently serving 205 children

Total funding: PY 23.24: \$1.2 million

- State funding increases for provider rates due in July. Currently \$631/ 15 hrs programing a week
- Any changes will not be seen until at least July

LOCAL FUNDING LANDSCAPE

SPK

Currently serving 282 children

Total funding SEPT 24-MARCH 25: \$1.3 million

- Live and/or work Summit County
- Income cap \$250,000
- One parent must work in Summit County
- Program goals to support school readiness for 3- and 4-year-olds
- Self employed must maintain an average income that exceeds their business expenses as well as verified business license in Summit County

FIRST STEPS

Currently serving 218 children

Total funding: SEPT 24-MARCH 25: \$902,631

- Live and/or work Summit County
- Income cap \$210,000
- Assets do not exceed \$225,000
- Program goal to support working families of children aged 0-3
- Self employed must maintain an average income that exceeds their business expenses as well as verified business license in Summit County